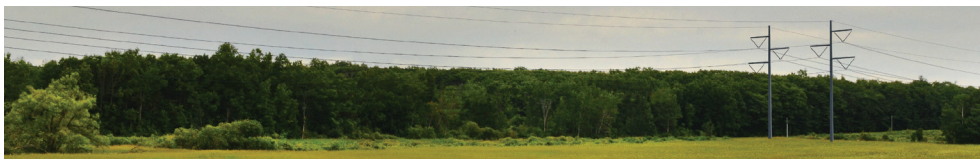


NOTICE OF THE START OF SEGMENT IV CONSTRUCTION

Case No. 19-T-0549, Application of LS Power Grid New York, LLC, LS Power Grid New York Corporation I, and the New York Power Authority for a Certificate of Environmental Compatibility and Public Need Pursuant to Article VII for Edic/Marcy to New Scotland; Princetown to Rotterdam Project



Construction activities covered by the Environmental Management & Construction Plans ("EM&CP") for Segment IV of the Central East Energy Connect Project (the "Project," formerly called the Marcy to New Scotland Upgrade Project) are anticipated to start on or about May 13, 2022. Surveys may begin prior to these dates.

The Project, which is anticipated to be constructed predominantly within approximately 93 miles of existing utility-owned transmission line corridor, includes the following components: (1) upgrades to the Marcy and Edic substations; (2) reconductoring, involving the replacement of two circuits of 230 kV transmission line with two circuits of 345 kV transmission line on existing structures, extending for approximately 13 miles from the Edic substation; (3) removal of two existing single circuit 230 kV transmission lines on H-frame structures, and replacement with a new 345 kV double circuit transmission line on steel monopoles, extending for approximately 55 miles (with the exception of up to two segments where the double circuit lines may split into single circuits); (4) construction of a new 345 kV substation in the Town of Princetown; (5) removal of two existing single circuit 230 kV transmission lines on H-frame structures, and replacement with two new single circuit 345 kV transmission lines on steel monopoles between the new Princetown substation and Rotterdam 345 kV (a/k/a Gordon Road) substation, extending for approximately 5 miles, one of which will connect to the new Princetown substation and the other will loop in the Edic portion of the existing Edic to New Scotland 345 kV line; (6) construction of the new 345/230/115 kV Gordon Road substation adjacent to the existing Rotterdam substation yard and upgrades at the existing Rotterdam substation; (7) construction of a new double circuit 345 kV transmission line on steel monopoles between the new Princetown substation and the New Scotland substation, extending for approximately 20 miles, rebuild of an existing single circuit 345 kV transmission line on new steel monopoles starting at the new Princetown substation and extending approximately 6 miles southward in that same corridor, and partial removal and/or removal from service of the existing Rotterdam to New Scotland 115 kV line in a portion of that same corridor; and (8) upgrades to the existing New Scotland substation.

The EM&CP for Segment IV generally includes the eastern approximately 50 miles of Project element (3) described above.

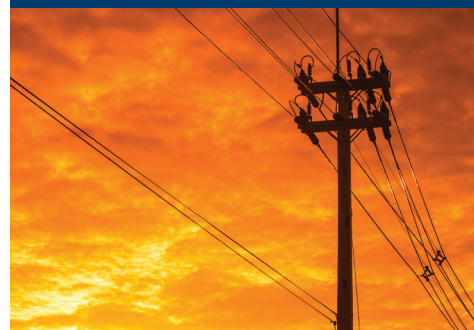
Construction activities for Segment IV of the Project are anticipated to start on or about May 13, 2022. Surveys may begin prior to these dates.

A map of the Project's Segment IV work is provided at the end of this notice. Comments, questions, and concerns regarding the construction of the Project may be provided to the Project team by calling (518) 888-2047 or contacting:

■ **Casey Carroll**
Vice President
LS Power Grid New York
1700 Broadway, 35th Floor
New York, NY 10019
Phone: (518) 888-2047
Email: ccarroll@LSPower.com

The Project is under the jurisdiction of the New York State Public Service Commission, which is responsible for enforcing compliance with environmental and construction conditions and may be contacted at:

■ **Matthew Smith**
Environmental Certification & Compliance, Office of Electric, Gas and Water, Department of Public Service
Three Empire State Plaza
Albany, NY 12223
Telephone: (518) 474-8702
Email: Matthew.Smith@dps.ny.gov



KEEPING YOU INFORMED

For updates and more information about the project, visit:

www.LSPGridNewYork.com

or call (518) 888-2047

Article VII Case No. 19-T-0549 at on.ny.gov/30wYSrU

More information about the Project is available electronically at the Project website www.LSPGridNewYork.com and in print copy at the following local libraries:

Holland Patent Free Library
9580 Main Street
Holland Patent, NY 13354

Utica Public Library
303 Genesee Street
Utica, NY 13501

Frankfort Free Library
123 South Frankfort Street
Frankfort, NY 13340

Ilion Free Public Library
78 West Street
Ilion, NY 13357

Weller Library
41 West Main Street
Mohawk, NY 13407

Jordanville Public Library
189 Main Street
Jordanville, NY 13361

Little Falls Public Library
10 Waverly Place
Little Falls, NY 13365

Fort Hunter Free Library
167 Fort Hunter Road
Amsterdam, NY 12010

Canajoharie Library & Art Gallery
2 Erie Boulevard
Canajoharie, NY 13317

Frothingham Free Library
28 West Main Street
Fonda, NY 12068

Fort Plain Free Library
19 Willett Street
Fort Plain, NY 13339

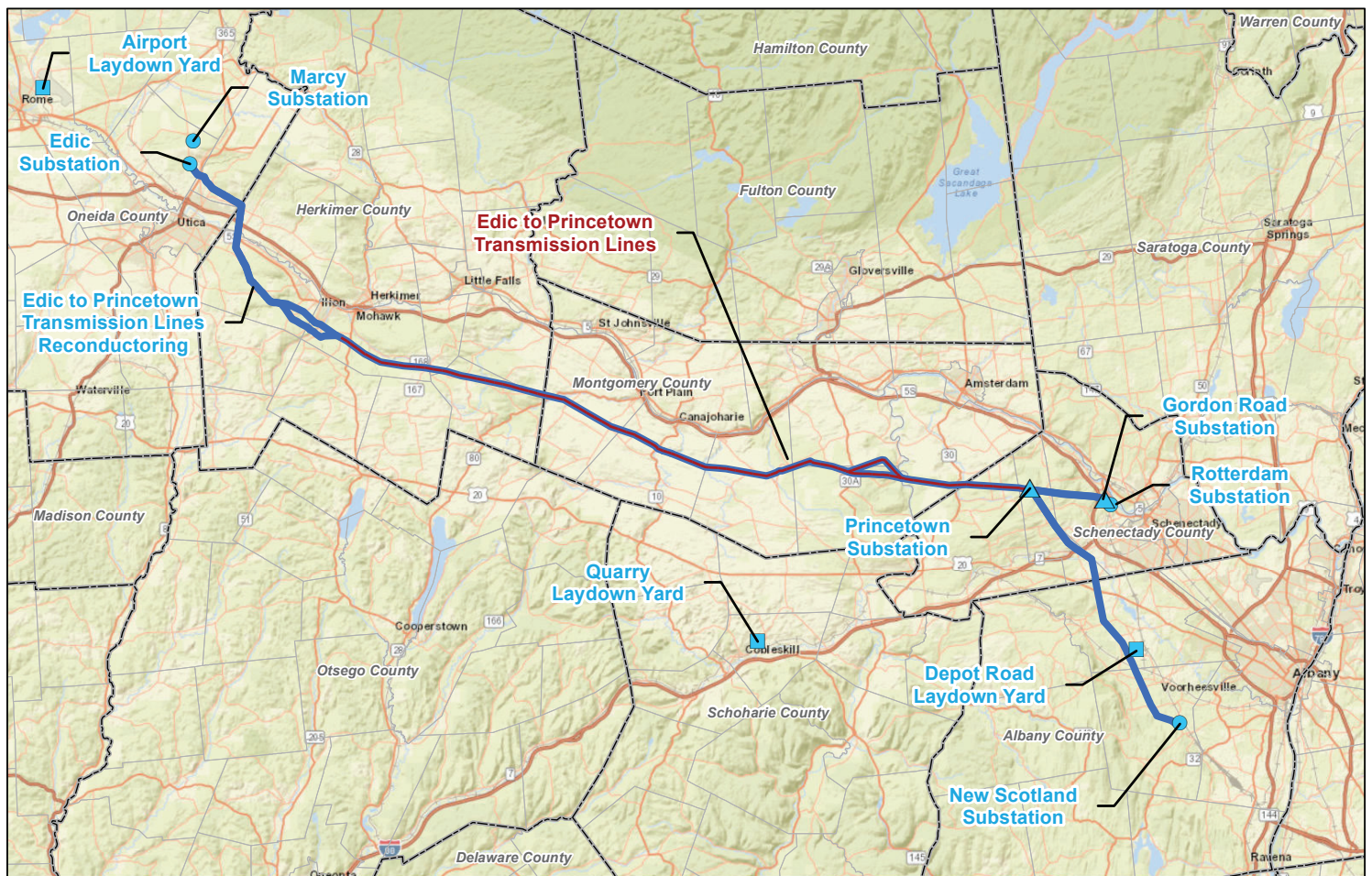
Rotterdam Branch Library
1100 North Westcott Road
Schenectady, NY 12306

Bethlehem Public Library
451 Delaware Avenue
Delmar, NY 12054

Guilderland Public Library
2228 Western Avenue
Guilderland, NY 12084

Altamont Free Library
179 Main Street
Altamont, NY 12009

Voorheesville Public Library
51 School Road
Voorheesville, NY 12186



Major Project Components

- ▲ New Substation
- Upgraded Substation
- Laydown Yard
- Segment IV Project Transmission Lines
- Project Transmission Lines

Segment IV components in red

0 5 10 20
Miles

LSP POWER GRID
NEW YORK



**Central East
Energy Connect**
Marcy to New Scotland
Transmission Improvements

Case No. 19-T-0549
Segment IV

LSP POWER GRID
NEW YORK

KEEPING YOU INFORMED

For updates and more information about the project, visit:

www.LSPGridNewYork.com

or call (518) 888-2047

Article VII Case No. 19-T-0549 at on.ny.gov/30wYSrU